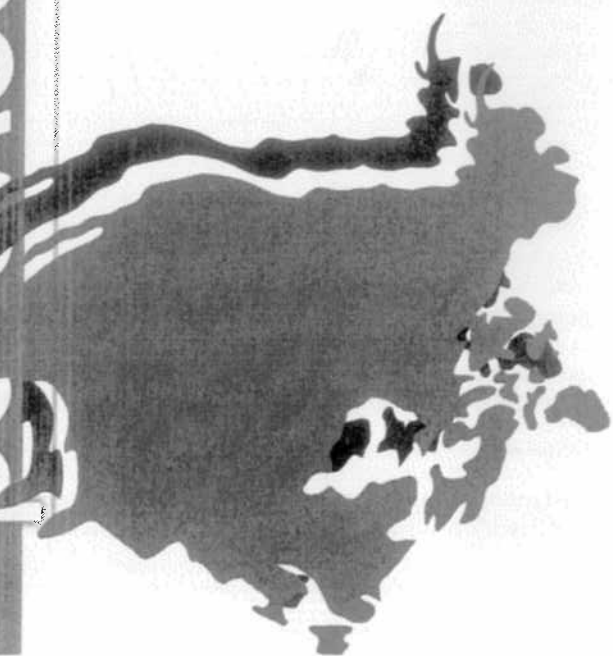


# Who Really Discover America?

## America?



-or- Why Columbus Was a Big Stinky Liar



# European Motives for Exploration

Europe's motives for exploration can be linked to either the quest of God, Gold, or Glory:

- Desire to Christianize
- Europe was desperate for goods from Asia and the Middle East, and needed a faster and cheaper method of getting there.
- Power and influence, rivalries with other nation-states

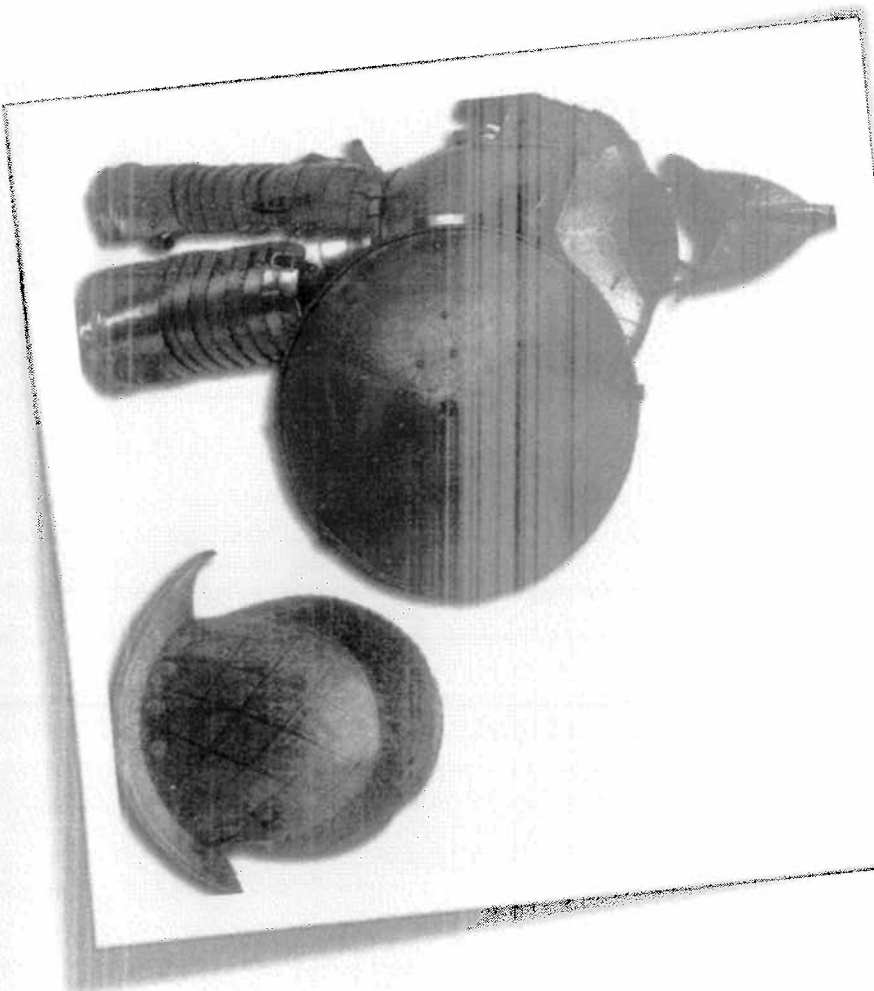
## First off... *Why* did

### Columbus make his voyage?

- ▣ Columbus, an Italian, was convinced that he could reach Asia faster by sailing west. Backed by Spanish monarchs, Columbus set sail with three ships and landed on present-day San Salvador Island.
  - ▣ Did he really think he was in India?
    - ▣ Yes, and no.

How was it possible for Columbus  
to conquer the new land?

## Better Materials



And small  
box killed  
90% of  
Native Americans

# Results of contact between Native-Americans and Europeans

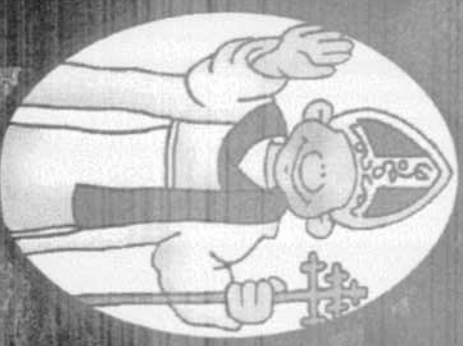
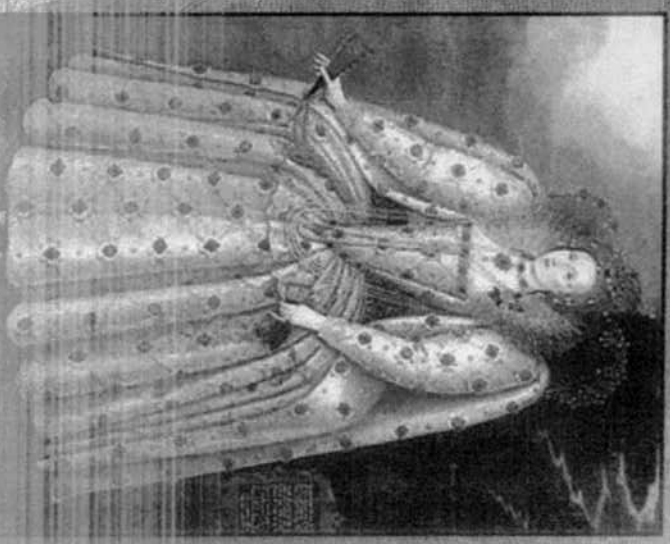


## For Europeans

- ↳ Global empires for 1st time in human history.
- ↳ Explosion of capitalism (Commercial Revolution) Revolutionized the international economy.
- ↳ Revolution in diet: Corn, beans, tomatoes & esp. potato lead to improved diet = higher mortality = higher population = bigger push for emigration. Stimulants: coffee, cocoa, and tobacco

# England v. Spain

- ⌘ Protestant England was in competition with Catholic Spain.
- ⌘ King Phillip II sent the invincible Spanish Armada against England.
- ⌘ Severe storms and brilliant military planning allowed the severely outnumbered English to destroy the Spanish.
- ⌘ This changed the power structure of Europe.



# The Jamestown Nightmare



- 80 Jamestown nearly failed due to starvation, disease, and attacks by the Powhatans.
- 80 John Rolfe introduced new tough strain of tobacco given to him by the Powhatans
- 80 Europeans became increasingly addicted to the nicotine; Tobacco industry became cornerstone of Virginia's economy.
- 80 Plantation system emerged

